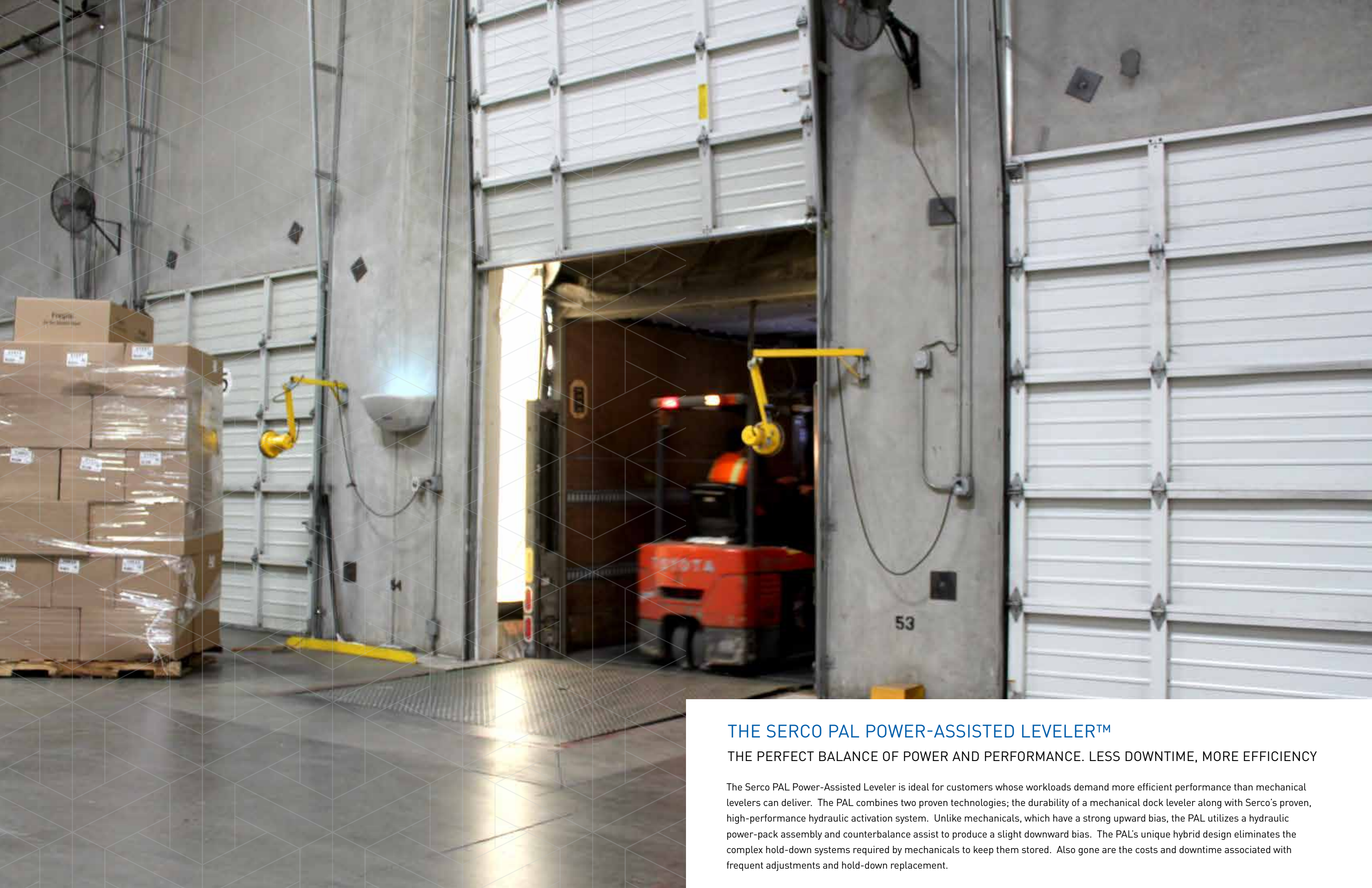


PAL POWER ASSISTED DOCK LEVELER



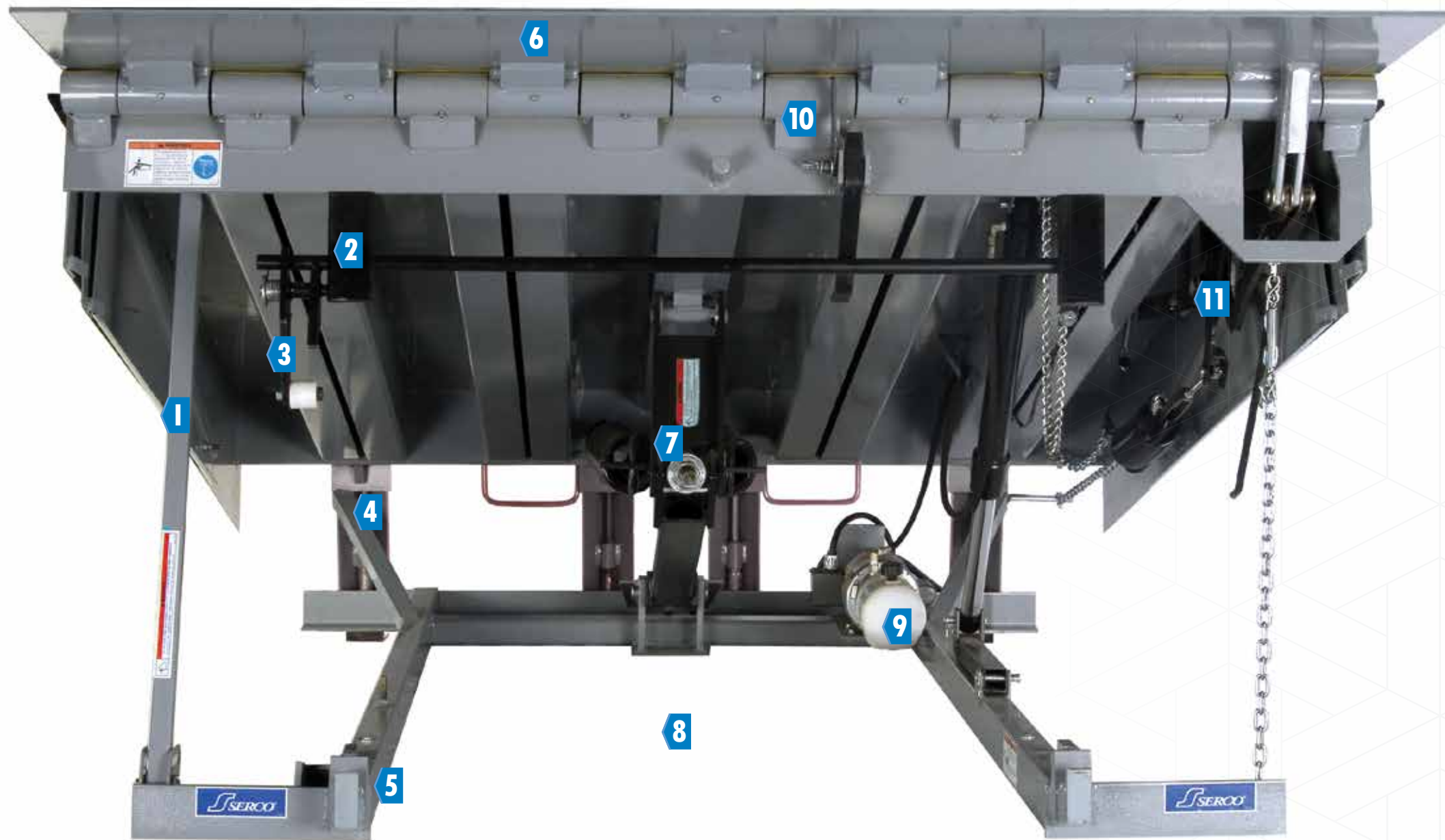
CAUTION
MOVE ON
GREEN
ONLY
MOVE ON
GREEN
ONLY



THE SERCO PAL POWER-ASSISTED LEVELER™

THE PERFECT BALANCE OF POWER AND PERFORMANCE. LESS DOWNTIME, MORE EFFICIENCY

The Serco PAL Power-Assisted Leveler is ideal for customers whose workloads demand more efficient performance than mechanical levelers can deliver. The PAL combines two proven technologies; the durability of a mechanical dock leveler along with Serco's proven, high-performance hydraulic activation system. Unlike mechanicals, which have a strong upward bias, the PAL utilizes a hydraulic power-pack assembly and counterbalance assist to produce a slight downward bias. The PAL's unique hybrid design eliminates the complex hold-down systems required by mechanicals to keep them stored. Also gone are the costs and downtime associated with frequent adjustments and hold-down replacement.



PRODUCT DETAILS

1. Integral maintenance strut with lockout capability for routine maintenance and cleaning.
2. Structural safety legs.
3. Exclusive Reflex Anti-Stump-Out System with a patented sensor roller that provides fluid free-float motion, while also providing a measure of free-fall protection in the event of premature trailer separation.
4. Exclusive SafeTFrame provides superior structural support and level interface with warehouse floor.
5. Nite-locks prevent unauthorized entry.
6. Optional 18" or 20" lip for longer lip purchase.
7. Simple low maintenance counter-balance system with single adjustment point.
8. Clean-Frame™ design for easy clean-up, maintenance and inspection.
9. Efficient 110v power-assist activation system draws only 5 amps, allowing up to 4 levelers to run on one 20 amp circuit, providing very low electrical installation costs and more efficient power usage for the life of leveler.
10. Integral lip support latch for routine maintenance and cleaning.
11. Exclusive Hydra-Cam™ Plus lip extension automatically extends lip at full height.
12. Optional Dock-Guard Barrier Lip prevents accidental forklift run-off.



PUSH BUTTON CONVENIENCE

Simple, easy push-button operation. Push to raise the deck and release to lower, it couldn't be easier than that.

5-YEAR GUARANTEE

Serco guarantees the PAL Power-Assisted Leveler will stand up to the toughest conditions. To prove it, we offer a 5-Year Parts & Labor Guarantee on the activation system.



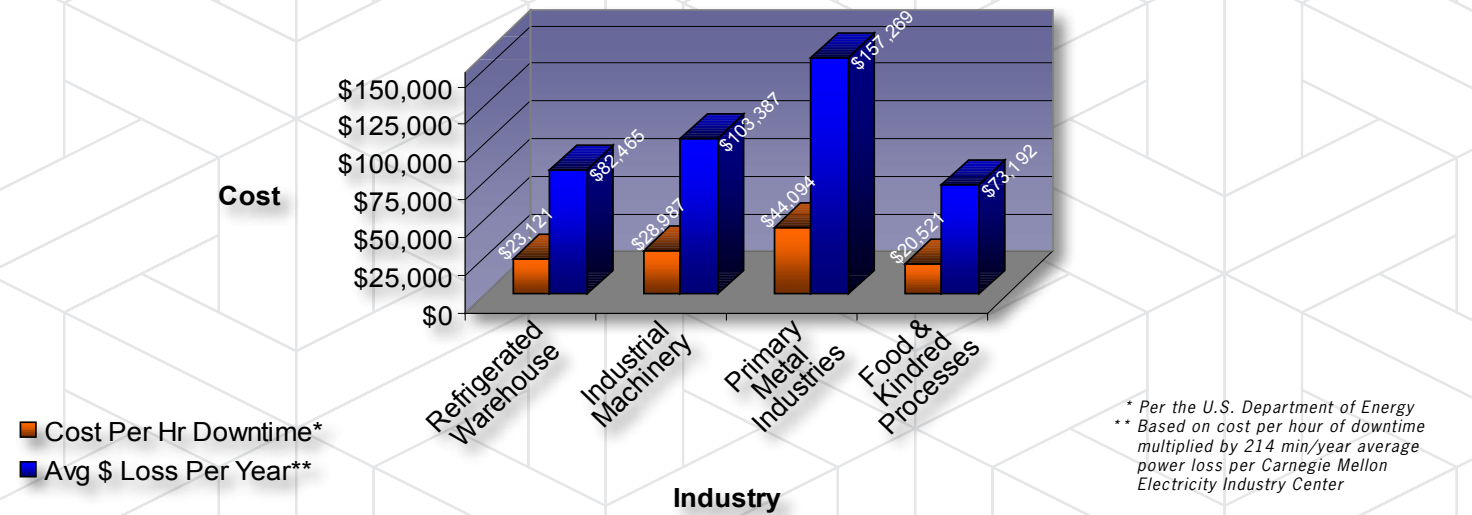


REFLEX™ ANTI-STUMP-OUT SYSTEM

“Stump-out” is an industry term associated with some models of dock levelers. Stump-out occurs when the mechanical safety legs, or stops, on the dock leveler engage and restrict the leveler’s movement during loading/unloading. The leveler lip assumes a steep angle to reach the trailer bed, which results in a potentially unsafe condition. With the majority of trailers on the road today equipped with air-ride suspensions, dock leveler Stump-out has become an ever-increasing issue on the dock. Serco’s Reflex anti-stump-out system eliminates stump-out using a patented sensor roller that rides along a reinforced cam surface, providing fluid free-float motion while also providing a measure of free-fall protection in the event of premature trailer separation.

POWERLESS LEADS TO PROFIT-LESS

Power outages resulting in downtime are common and costly. On average Americans lose 214 minutes of power every year. According to the U.S. Department of Energy, there were a total of 160 major power outages in 2006 and 2007, 62% were weather related and 37% were due to inadequacies with the existing electrical networks/grids. Depending on the industry, the costs of this downtime are high:



POWER GRID RELIABILITY QUESTIONS

The future outlook does not look brighter. Experts continue to emphasize that the nation’s power grid is growing more and more unreliable. In fact, the North American Electric Reliability Council projected in their 2007 Long-Term Reliability Assessment that electricity demand is expected to exceed the capacity of existing electrical networks in the next two to three years.

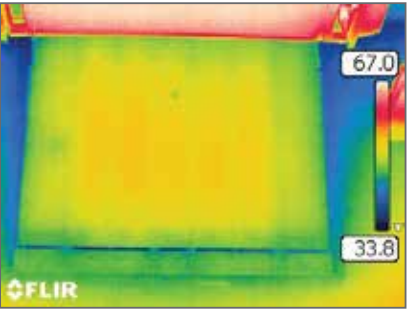
SO WHAT'S THE ANSWER?

The Serco PAL Power-Assisted Leveler is designed to maintain an efficient operation 24-7. In the event of a power failure during loading or unloading, the PAL can be restored, and the building secured, with an easy-to-use manual override device. If busy schedules demand that operations continue, the tool can be used to position the leveler manually. The PAL is the only powered dock leveler that can continue to be operated without power, providing the ultimate reliability and flexibility in today’s fast-moving dock environment.

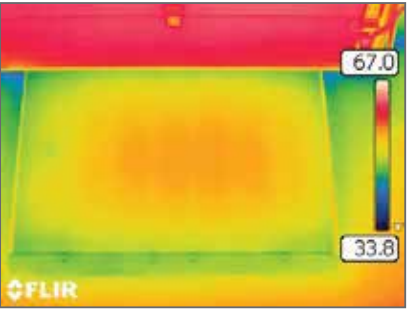


GUARD AGAINST ENERGY LOSS

Energy Guard® prevents energy loss by providing a superior perimeter seal along the sides and rear of the leveler and blocks dirt, debris & insects from infiltrating the loading dock. The innovative design closes off the gaps between the dock leveler and concrete pit walls, preventing the mass flow of air into and out of the facility and minimizing energy loss. Energy Guard is a factory installed option available on all dock levelers.



BEFORE: Hot or cold air can easily transfer through perimeter gaps.



BEFORE: Hot or cold air can easily transfer through perimeter gaps.

DESIGN ADVANTAGES

- Seal assemblies rotate rather than scrape the pit wall to reduce wear and increase effective life
- Expanded sealing range creates an effective perimeter seal up to 9” above dock level
- Rear hinge seal assembly’s durable 2-ply material flexes during operation to block air flow at the rear
- Design leaves access to the pit clear for cleaning and dock leveler inspections
- Factory Installed – No field installation or pit mounted hardware
- Design avoids risk of fabric being cut, torn or damaged by trailers or debris resulting in expensive replacement
- Unrestricted access to pit for cleaning and dock leveler inspection. No curtains or fabric blocking access to the dock leveler and pit



SAFE T FRAME

A SAFER, STRONGER DOCK LEVELER

For decades all dock levelers installed in a concrete pit have required an installer to place and weld steel shim under the rear frame in order to level the device and provide long-term support. This conventional process can lead to install errors as installers are often working under the dock leveler in a cramped environment and may not use the correct size shim and/or weld the shim properly. The result... the dock leveler can suffer structural fatigue which may lead to expensive repair or replacement.

DESIGN ADVANTAGES:

- Greater structural strength & durability
- Eliminates installation issues common with conventional dock levelers
- Ensures level transition from warehouse floor to dock leveler
- Eliminates premature structural fatigue due to improperly shimmed/installed dock leveler

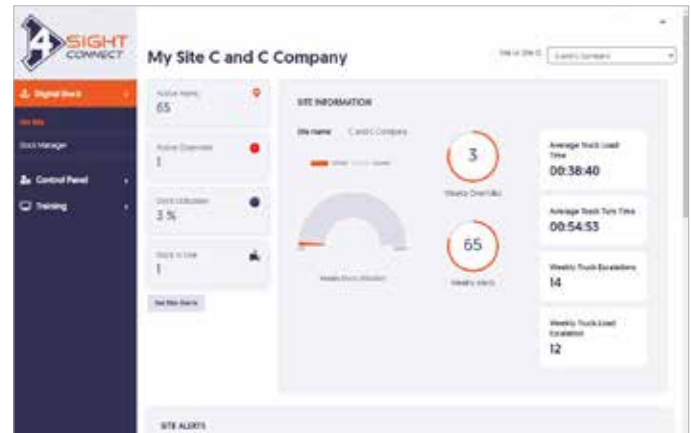


INTEGRATE YOUR SERCO EQUIPMENT FOR SAFER, MORE EFFICIENT AND PRODUCTIVE DOCKS.



Streamline your loading dock equipment with the simple push of a button by adding the Serco Digital Master Control Panel with HMI. As workloads increase, busy loading docks only get more complicated, making automating your dock equipment necessary in order to meet the demands. Managing your loading dock operation as an integrated system is key to ongoing dock safety. The digital master control panel requires dock workers to operate equipment through a guided sequence, minimizing operator error, training time for seasonal staff and turnover rates.

Merges real-time data collection and on-demand communication with personnel activity, via the world wide web, allowing for better operational decisions. 4SIGHT Connect products provide data to help facilities adjust for better cost management. It observes and calls attention to lags in production and work inefficiencies to eliminate waste, unnecessary work, and resources for cost efficiency and operational growth.



DON'T JUST OBSERVE IT, LIVE THE EXPERIENCE.

Serco® leads the industry in specialty dock levelers, safety products and programmable control systems, offering a comprehensive portfolio of loading dock and warehouse solutions. We are delighted to invite you to our 6,000 square foot showroom, known as the Academy in Carrollton, Texas. The Academy gives you a very special opportunity to get to know our products in person. Gain hands on experience and enjoy one-on-one interaction with our engineering and manufacturing team in this state-of-the-art facility.



CAN'T MAKE THE TRIP TO DALLAS?

Let our Mobile Academy come to you. Our 53' completely enclosed and temperature-controlled trailer features over 25 full-sized, fully-functional dock equipment demo units. Call 1-877-778-DOCK (3625) to schedule an appointment and we'll drive our solutions straight to your door.



1612 Hutton Dr., Suite 140
Carrollton, TX 75006
800.933.4834
www.sercodockproducts.com

4Front Engineered Solutions reserves the right to change specifications and designs without notice and without incurring obligations. 4Front Engineered Solutions products may be the subject of one or more U.S. and/or foreign, issued and/or pending, design and/or utility patents. Serco as word and logo are registered trademarks belonging to ASSA ABLOY Entrance Systems AB or other companies controlled by the same organization. All rights reserved.

©ASSA ABLOY. All rights reserved. Part of ASSA ABLOY. Printed in USA. Form # SCB-DP00-0521