

# HVLS FANS



Red on Silver Combination

# COMMERCIAL HVLS FANS

Expecting a little more than your average commercial fan? Get to know Serco commercial fan. This energy-efficient solution is powerful enough to keep your space cool and comfortable while eliminating the need for multiple residential fans. Plus, you can put your own stamp on it to create a gorgeous commercial fan that's everything you've imagined.

## AVAILABLE COLORS

RAL powder coat colors.

Custom colors and combinations are available.



SILVER



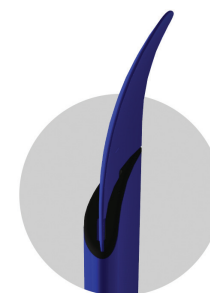
BLACK



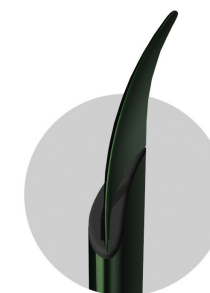
WHITE



RED



BLUE



GREEN



ORANGE

## ENERGY EFFICIENT

There's a lot of power in our fans; you'll likely never have to run it at full speed to control your space. At wattages less than a 100-watt light bulb, you can feel up to 4-7 degrees cooler. Plus, every degree change equals nearly 3% savings on your energy bill. Now that's a breath of fresh air.

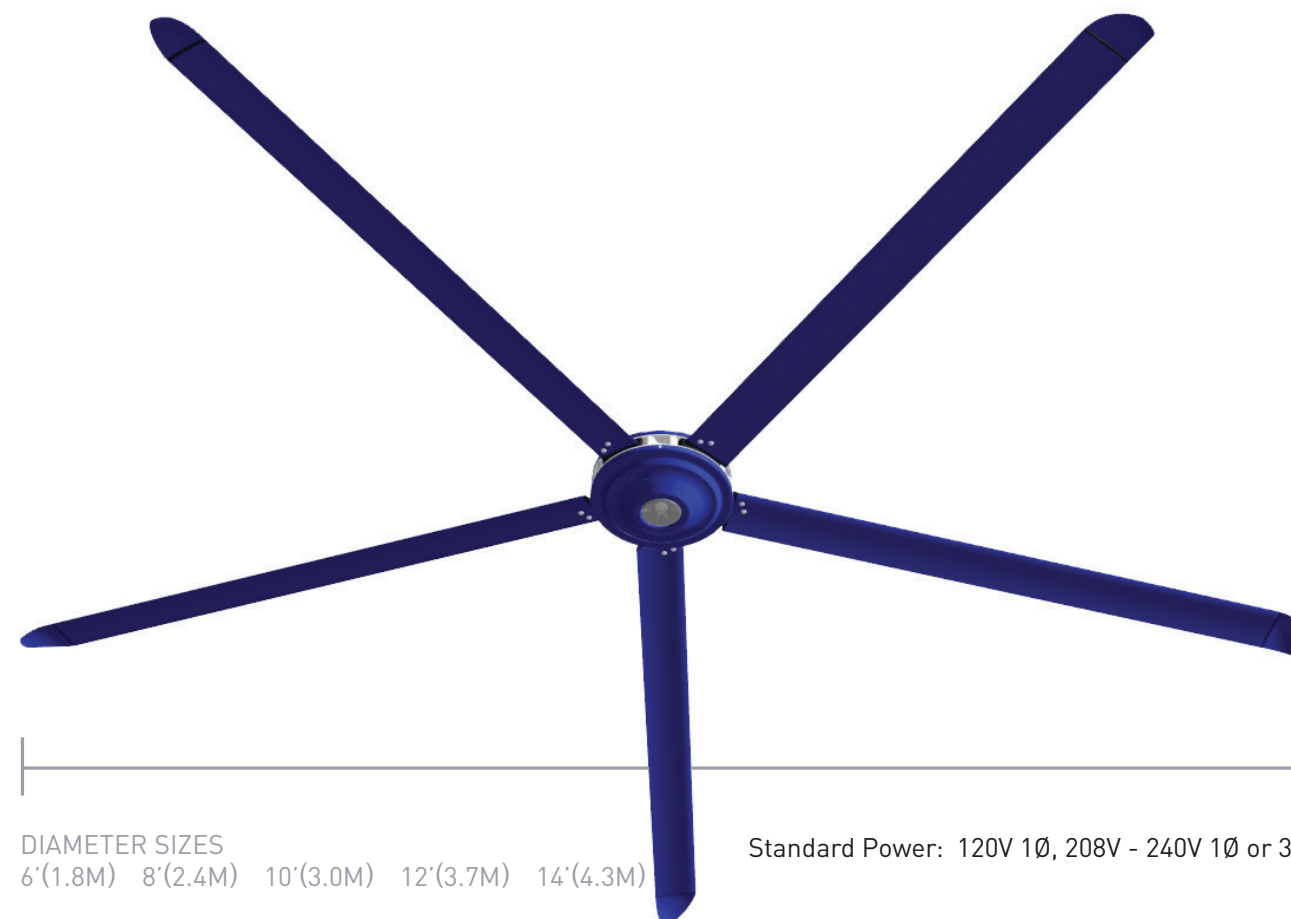
*\*In accordance with the ASHRAE Standard 55-2010 Comfort Calculator*

## KEY FEATURES

- Wired Touch Screen Remote
- Reverse Capability
- 6-14 feet (1.8-4.3 M) in diameter
- Fire Shut Down Integration
- Gearless Direct Drive Motor
- Less Than 35 dBA\*

*\*Results of sound measurement in the field may vary due to variations in surface types, environment and conditions.*

**Standard Power**      120V - 240V 1Ø  
240V 3Ø



DIAMETER SIZES  
6'(1.8M) 8'(2.4M) 10'(3.0M) 12'(3.7M) 14'(4.3M)

Standard Power: 120V 1Ø, 208V - 240V 1Ø or 3Ø



# INDUSTRIAL HVLS FAN

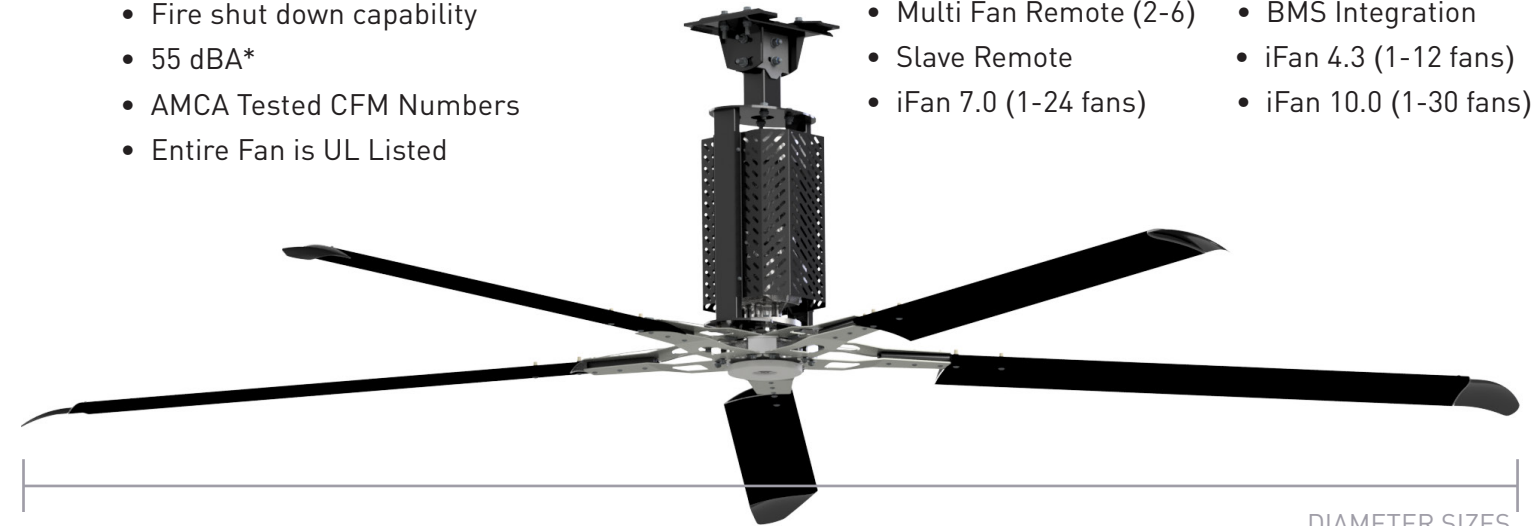
A large space calls for an equally grand fan. Up to 24 feet in diameter, the colossal Serco industrial fan moves extraordinary amounts of air, alleviates hot and cold spots, and keeps the air in your facility in constant motion. The Industrial HVLS fan will ensure, your space has a perceived 4-7 degrees cooler feel, offers long term energy savings, and when you need to heat things up, the fan features reverse circulation, which ensures that everything stays “just right” year-round.

## KEY FEATURES

- Extruded aluminum black or clear anodized blades
- 8-24 feet (2.4-7.3 M) in diameter
- Rotary airfoil winglet design
- Trouble shooting from ground level
- Fire shut down capability
- 55 dBA\*
- AMCA Tested CFM Numbers
- Entire Fan is UL Listed

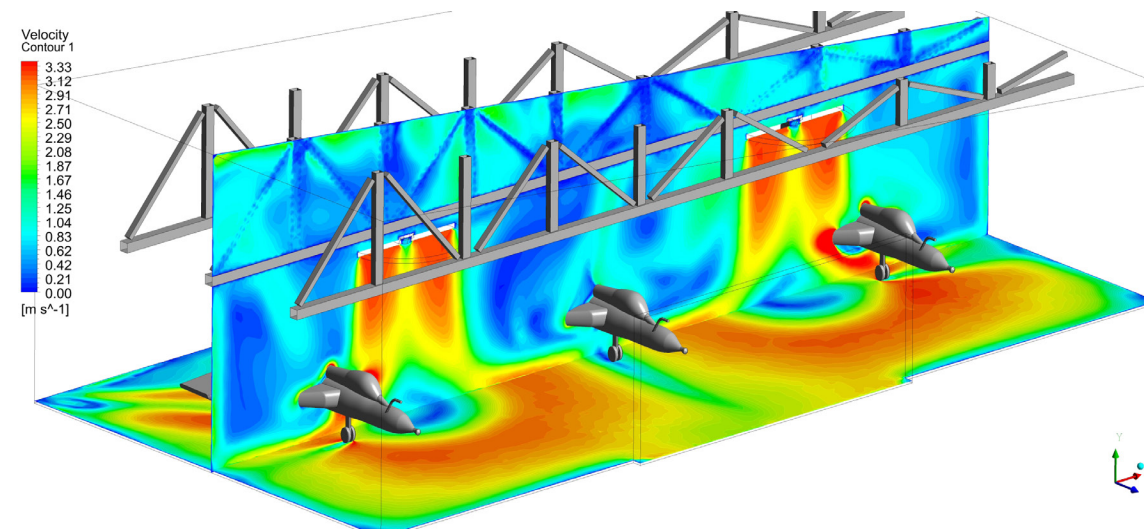
## OPTIONS

- Mounting Extension
- Additional Powder Coating Options
- NEMA 4X VFD Enclosure
- NEMA 4X Remote Enclosure
- Corrosion Resistant Package (Consult Factory)
- Multi Fan Remote (2-6)
- Slave Remote
- iFan 7.0 (1-24 fans)
- BMS Integration
- iFan 4.3 (1-12 fans)
- iFan 10.0 (1-30 fans)



**Standard Power:** 208 - 240V 1Ø or 3Ø, 460-480V, 575V 3Ø

**DIAMETER SIZES**  
 8'(2.4M) 10'(3.0M) 12'(3.7M) 14'(4.3M)  
 16'(4.9M) 18'(5.5M) 20'(6.1M) 24'(7.3M)



## REVERSE CIRCULATION

Our fans help keep your facility warm inside during the colder months. You can run the fans in reverse to circulate trapped hot air at the ceiling level without producing a wind chill effect below.

The largest HVLS fan, the 24-foot diameter, has been proven to improve airflow in a coverage area of **30,000 square feet**, the largest in the industry.

\*Results of sound measurement in the field may vary due to variations in surface types, environment and conditions.

# DIRECT DRIVE HVLS FAN



The Direct Drive HVLS fan is designed to move extraordinary amounts of air, helping your entire facility run smoothly, while providing substantial energy savings. Not only will you feel the difference of a noticeably cooler space, but you'll also reduce stagnant air, alleviate hot and cold spots and keep food dry and fresh. The fan is available in diameters ranging from 8 feet to 24 feet to accommodate your space and a variety of customization options.

**KEY FEATURES**

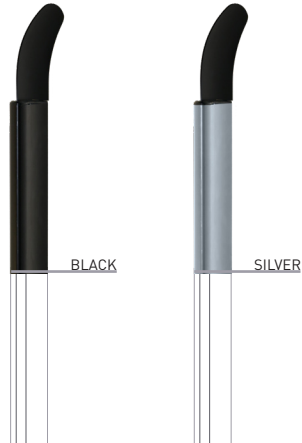
- Extruded aluminum black or clear anodized blades
- 8-24 feet (2.4-7.3 M) in diameter
- Rotary airfoil winglet design
- Trouble shooting from ground level
- Fire shut down capability
- 45 dBA\*
- AMCA Tested CFM Numbers
- Entire Fan is UL Listed

**OPTIONS**

- Mounting Extension
- Multi Fan Remote (2-6)
- BMS Integration
- Slave Remote
- iFan 4.3 (1-12 fans)
- iFan 7.0 (1-24 fans)
- iFan 10.0 (1-30 fans)

**STANDARD COLORS**

Custom colors and combinations are available on frame, mount & winglets.



DIAMETER SIZES  
 8'(2.4M) 10'(3.0M) 12'(3.7M) 14'(4.3M) 16'(4.9M) 18'(5.5M) 20'(6.1M) 24'(7.3M)

Standard Power: 208 - 240V 1Ø or 3Ø, 460-480V, 575V 3Ø. 120V 1Ø (8 to 14 ft diameter only)

\*Results of sound measurement in the field may vary due to variations in surface types, environment and conditions.

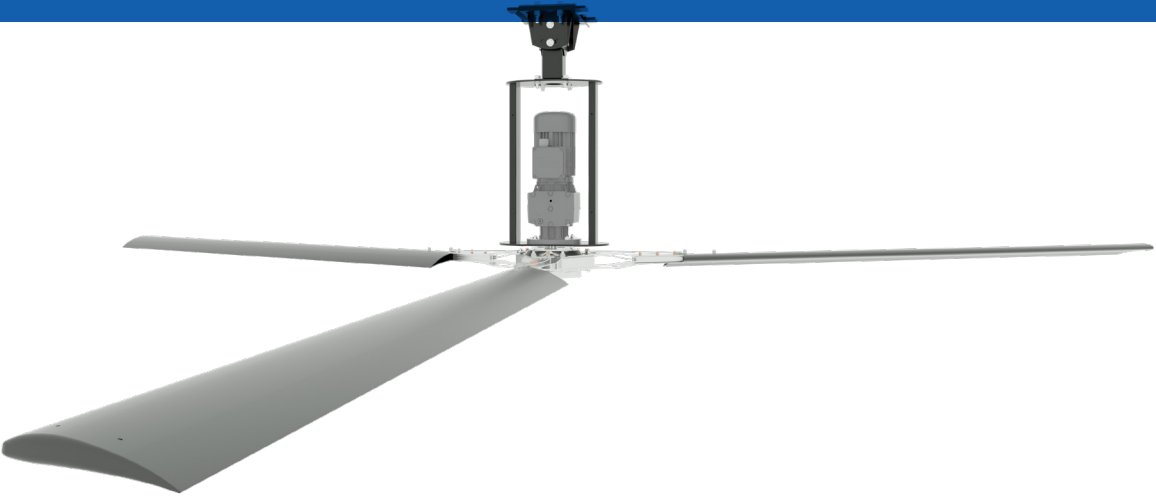


The Serco 3-Blade fan is designed to move extraordinary amounts of air, helping your entire facility run smoothly, while providing substantial energy savings. Not only will you feel the difference of a noticeably cooler space, but you'll also reduce stagnant air, alleviate hot and cold spots and keep food dry and fresh. The Serco 3-Blade fan is available in diameters ranging from 8 feet to 24 feet to accommodate your space and a variety of customization options.

**KEY FEATURES**

- Extruded Aluminum clear anodized blades
- 8-24 feet (2.4-7.3 M) in diameter
- 55 dBA\*
- Fan safety system incorporates steel hub, aircraft grade safety cable and guy wires
- Fire Shut Down integration
- Variable Frequency Drive with forward/reverse operation
- AMCA Tested CFM Numbers

**3-BLADE HVLS FAN**



DIAMETER SIZES  
 8'(2.4M) 10'(3.0M) 12'(3.7M) 14'(4.3M) 16'(4.9M) 18'(5.5M) 20'(6.1M) 24'(7.3M)

Standard Power: 120V 1Ø, 208V - 240V 1Ø or 3Ø, 460-480V, 575V 3Ø





### WIRELESS iFAN OPTIONS

The new wireless iFan control system operates on an RF 900MHZ network, enabling seamless communication between fans over distances of up to 1,500 feet. Even in environments with walls, racking, and other line-of-sight impediments, users can trust consistent and reliable connectivity without the need for traditional low-voltage wiring. The wireless iFan empowers businesses to maximize airflow while reducing costs and installation complexity.

### STANDARD CONTROL



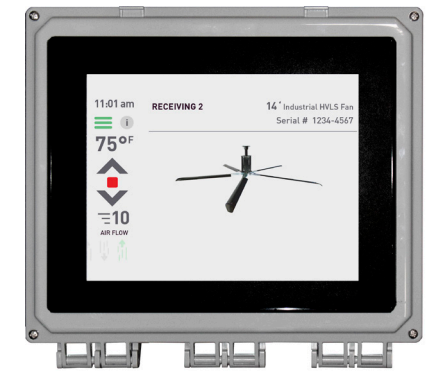
### iFAN™ NETWORK CONTROL



iFan 4.3



iFan 7.0



iFan 10.0



Commercial Fan VFD with Wireless Module



VFD Panel with Wireless Module (Industrial, Direct Drive, 3-Blade)

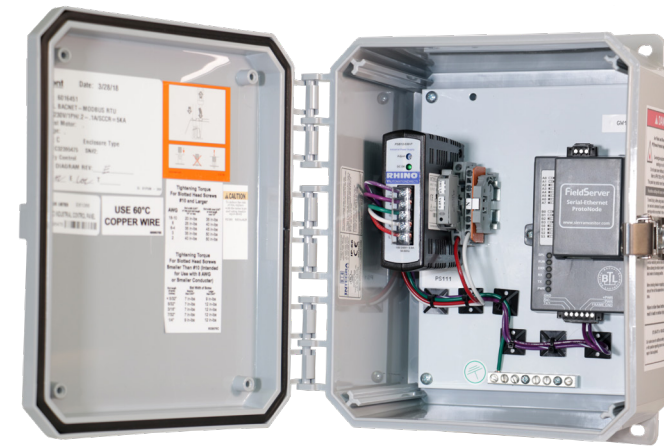


Fire Panel with Wireless Module

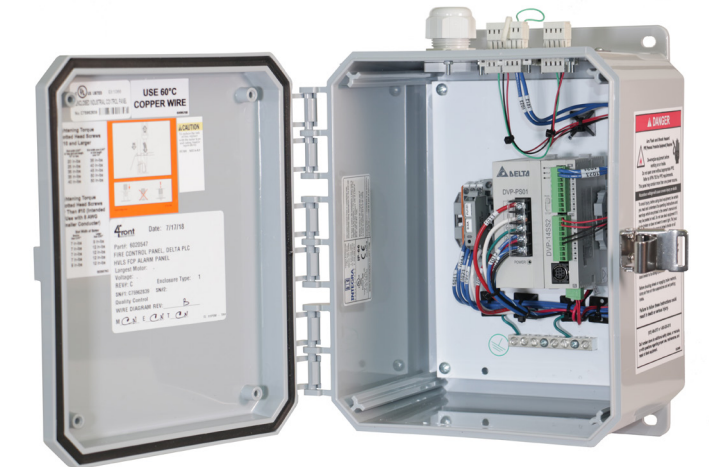


iFan with Wireless Module

### CONNECTION OPTIONS



BMS Integration\*



Building Fire Connection\*

\* Requires 120 V Power

### STAY IN TOTAL CONTROL

Whether you have a small area or a building full of fans, Epic fans can meet the needs of facilities of all shapes and sizes. From individual controls to small-group networking to integration into your building management system, there's a control option for you.

### PICK THE CONTROLS THAT FIT

#### STANDARD FEATURES



Standard Touch Screen



iFAN 4.3



iFAN 7.0



iFAN 10.0

Single Fan Operation	●	●	●	●
Multi-Fan Operation	6	12	24	30
BMS Integration	●	●	●	●
Temperature Option	1 Fan	3 Groups	4 Groups	4 Groups
Building Fire Connection	●	●	●	●
Wireless Option	●	●	●	●

### VFD PANEL



### APEX NEMA4X VFD PANEL



### OPTIONS TO SCALE

Network all your facility's fans with our intelligent iFan™ system. You can easily control fan speeds individually by zone or facility in real time from a touchscreen panel, saving you energy and increasing efficiencies where less airflow is necessary.



# MOUNTS

## MOUNTING OPTIONS

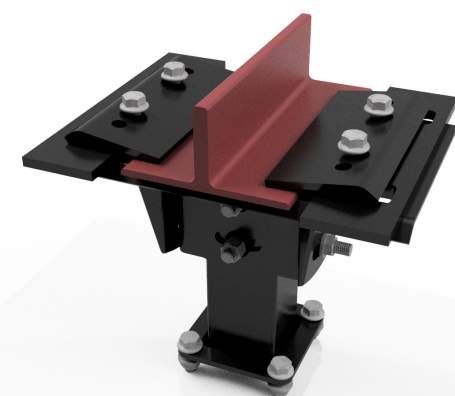
HVLS fans can be mounted in several ways. Installers should analyze the facility and airflow needs to assess the options before mounting the fans.



TRUSS MOUNTING KIT



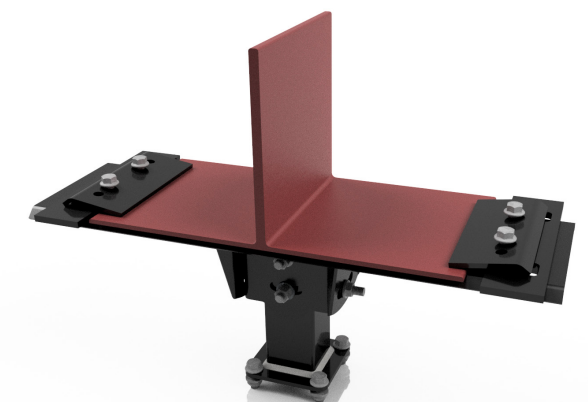
ZPURLIN MOUNTING KIT



STANDARD I-BEAM MOUNT



LAMINATED WOOD BEAM BRACKETS



EXTRA WIDE BEAM PLATE



# TRIAIRE RESIDENTIAL

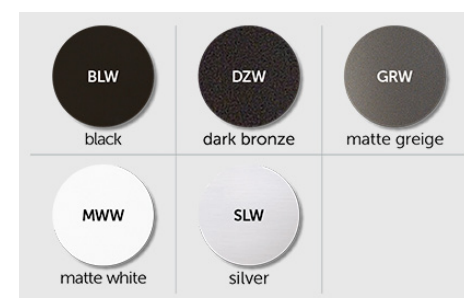


The TriAire Custom by Fanimation fits any style in any location. With eight different blade sweeps in multiple finishes, you can create the TriAire custom that fits your space. This wet rated ceiling fan has a 31 DC motor, Light kit, blades and motor sold separately

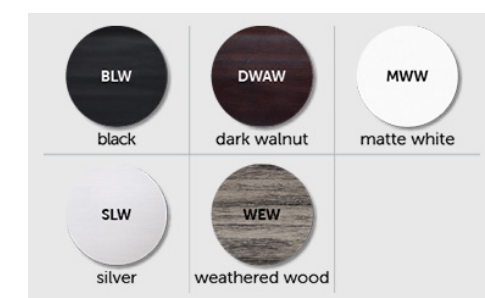
## OPTIONS

- Close to Ceiling Mounting Kit
- Sloped Ceiling Ball (up to 42 degree)
- Longer Downrods
- Wired Wall Remote
- Light Kit
- Wireless
- Dry, Damp & Wet Rated
- 2-Wire Fan-only Wall Control

## FAN FINISHES



## BLADE SET FINISHES







1612 Hutton Dr.  
Suite 140,  
Dallas, TX 75006  
800.933.4834  
sercodockproducts.com

4Front Engineered Solutions reserves the right to change specifications and designs without notice and without incurring obligations.

4Front Engineered Solutions products may be the subject of one or more U.S. and/or foreign, issued and/or pending, design and/or utility patents.



Serco as words and logos are registered trademarks belonging to ASSA ABLOY Entrance System AB or other companies controlled by the same organization. All rights reserved.

©ASSA ABLOY Entrance Systems AB  
All rights reserved. Part of ASSA ABLOY  
Printed in USA. Form #SCB-FLHVLS-0325