

Ironside™ Dock Seal with Head Curtain

Product Specifications



DESIGN HIGHLIGHTS

- Exclusive EFC (Encapsulated Foam Chambers) Head Curtain with 1" x 3" chambers provides superior sealing on trailer top, compared to standard head curtains
- Exclusive UHWR fabric provides high abrasion resistance
- Integrated pull rope system allows full adjustability to varying trailer heights.
- Exclusive heat-sealed, full length, yellow guide stripes
- Exclusive roll-formed, galvanized steel framing
- Endurance-tested foam core is continuously bonded to frame surface with flexible, non flammable adhesive
- Top of hood is tapered forward and securely fastened to building wall
- Fiberglass stays add stiffness to hood top to prevent sagging
- Hood curtain splits offer load relief and higher clearance
- Highly resilient, open-celled polyurethane foam keeps original shape and compresses easily to extend seal life
- Side pad bottoms are tapered to avoid pinching and wear
- All pads are vented for air and moisture release

APPLICATION DATA

Door width: _____ ft. _____ in. Door height: _____ ft. _____ in.
 Dock height: _____ ft. _____ in. Bumper protection*: _____ in.
 (*Includes bumper projection and any building wall/foundation offset or cantilever)

TRUCKS AND TRAILERS SERVICED

Width: _____ Max. _____ Min.
 Height: _____ Max. _____ Min.
 Length: _____ Max. _____ Min.
 Hydraulic tailgate: Yes No Rear step section: Yes No
 Tailgate/step section size: _____ in Yard jockeys: Yes No

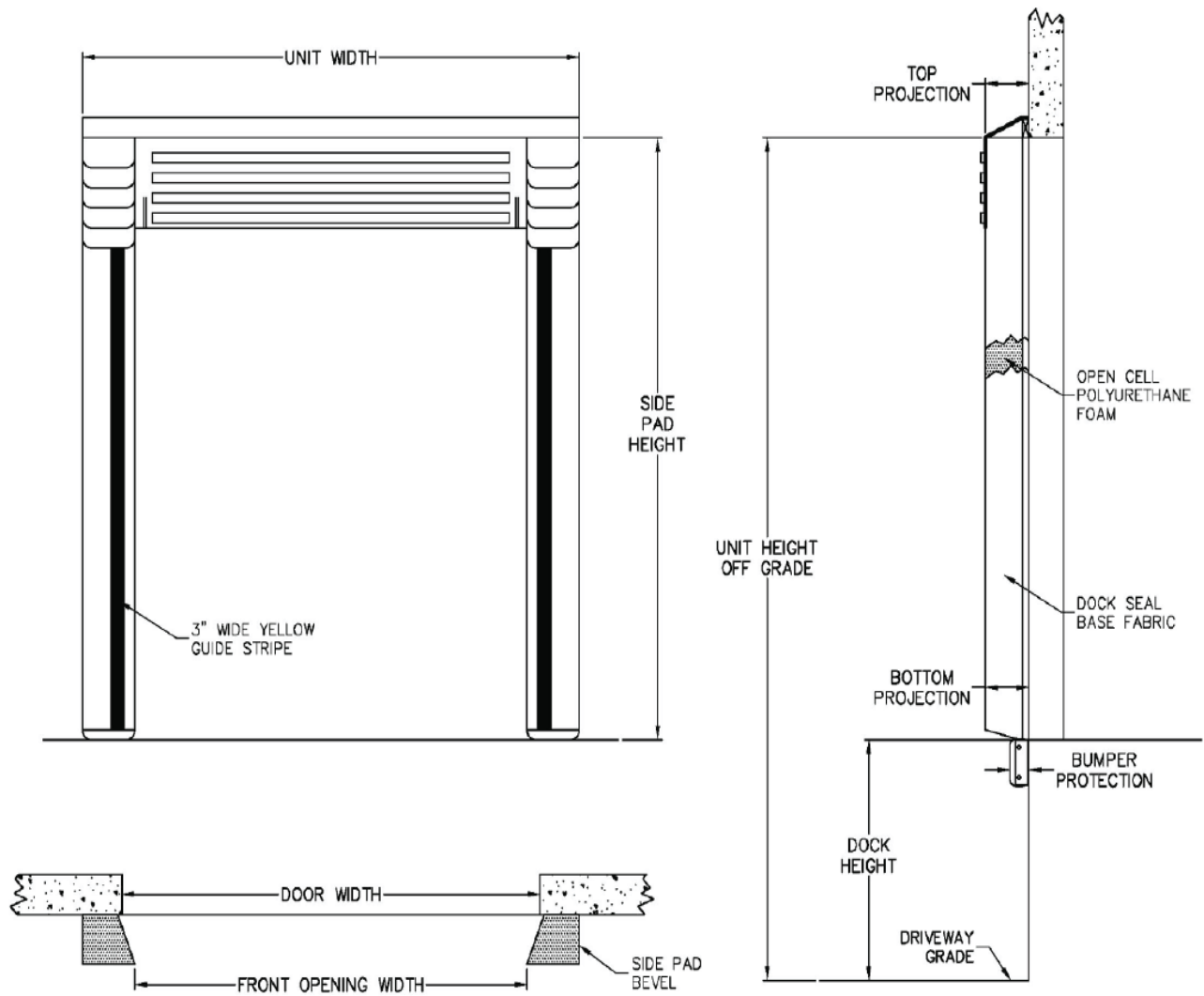
PROJECT INFORMATION

JOB NAME _____
 ADDRESS _____
 GENERAL CONTRACTOR _____
 DISTRIBUTOR _____
 QUANTITY _____

CERTIFIED FOR CONSTRUCTION

BY _____
 COMPANY _____
 ADDRESS _____
 DATE _____

- Exclusive SHARC™ (Super High Abrasion Resistant Compound) fabric tested against competitive fabrics tested



Quantity _____

Drop Curtain: None 12" 18" 24" Velcro strips Full width

Side Pad Height: _____ (Total inches)

Side Pad Back/Face: 12/12 6/10 8/12 10/12 10/15 8/15 12/15 10/18 6/14

Base Material: 22 oz. black vinyl standard

Taper: Tapered Non-Tapered

Top Projection: 8" 10" 12" 14" 16" 18" 20" 22" 24"

Bottom Projection: 8" 10" 12" 14" 16" 18" 20" 22" 24"

Bottom Flaps: 3" Inside standard

Blockout: None Top projection _____" Bottom projection _____"

Wear Face: Full height side pad & full width head pad with UHWR fabric standard, black

Reinforced Inside Face: Full height side pad with UHWR fabric standard, black

Options: Door numbers

Side Pad Mounting Brackets: None Flats & angles Angles 1 1/2" Offsets & Angles

*Conversions: To convert measurements to metric, see formulas below:

Inches x 25.4 = millimeters (Example: 4" x 25.4 = 101.6 mm)

Feet x .3048 = meters (Example: 12' x .3048 = 3.66 m)



Serco
 1612 Hutton Drive, Suite 140
 Carrollton, TX 75006
 800.933.4834
www.sercodockproducts.com

4Front Engineered Solutions reserves the right to change specifications and designs without notice and without incurring obligations. 4Front Engineered Solutions products may be the subject of one or more U.S. and/or foreign, issued and/or pending, design and/or utility patents. Serco as word and logo are registered trademarks belonging to ASSA ABLOY Entrance Systems AB or other companies controlled by the same organization. All rights reserved.

©ASSA ABLOY. All rights reserved. Part of ASSA ABLOY. Printed in USA. Form # SPS-SEIHC-0724