

S3000L L-PAD Standard Dock Seal

Product Specifications



DESIGN HIGHLIGHTS

- L-shaped sides compress around side of trailer to create a seal providing full width trailer access
- Provides positive seal between internal and external environments
- Endurance-tested foam core is continuously bonded to frame surface with flexible, non-flammable adhesive
- Wide selection of coated fabrics provide maximum durability
- Highly resilient, open-celled polyurethane foam compresses easily to extend seal life
- Roll-formed galvanized steel framing reduces pressure on building wall
- All pads are vented for air and moisture release
- Full length yellow stripes guide
- Heavy-duty, galvanized steel mounting brackets included

APPLICATION DATA

Door width: _____ ft. _____ in.

Door height: _____ ft. _____ in.

Dock height: _____ ft. _____ in.

Bumper protection*: _____ in.

(*Includes bumper projection and any building wall/foundation offset or cantilever)

TRUCKS AND TRAILERS SERVICED

Width: _____ Max. _____ Min.

Height: _____ Max. _____ Min.

Length: _____ Max. _____ Min.

Hydraulic tailgate: ☐ Yes ☐ No Rear step section: ☐ Yes ☐ No

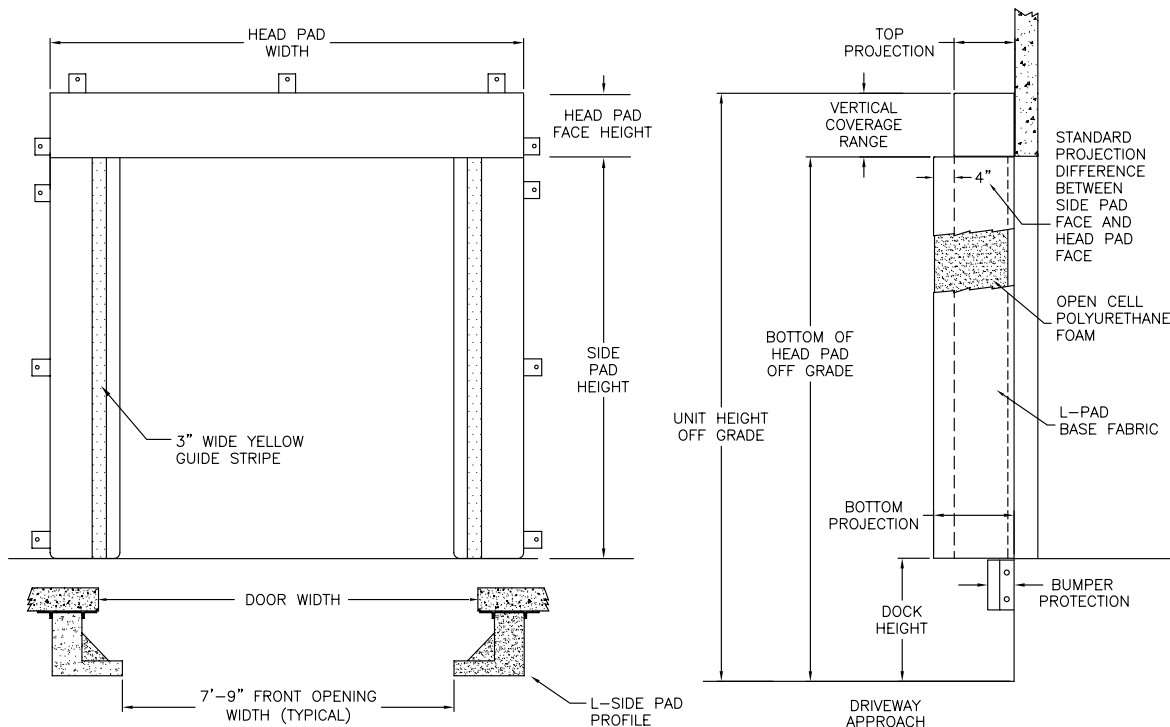
Tailgate/step section size: _____ in Yard jockeys: ☐ Yes ☐ No

CERTIFIED FOR CONSTRUCTION

BY _____
 COMPANY _____
 ADDRESS _____
 DATE _____

PROJECT INFORMATION

JOB NAME _____
 ADDRESS _____
 GENERAL CONTRACTOR _____
 DISTRIBUTOR _____
 QUANTITY _____



Quantity _____

Framing: Roll-formed galvanized steel

Head Pad Width: ☐ 129" for 9'3" door widths or smaller ☐ 135" for 9'4" to 10'0" door widths

Head Pad Bevel: ☐ 12/12 ☐ 18/18 ☐ 24/24 ☐ 12/15 ☐ 12/18 ☐ Guardian head pad

Drop Curtain: ☐ None ☐ 12" ☐ Hook-Loop

Side Pad Height: _____ (Total unit height)

Side Pad Face ☐ 18" for 9'3" door widths or smaller ☐ 21" for 9'4" to 10'0" door widths

Base Material ☐ 22 oz. vinyl ☐ 40 oz. vinyl ☐ XL-100

Color: ☐ Black ☐ Tan ☐ Brown ☐ Blue ☐ Green

Taper: ☐ Tapered ☐ Non-Tapered

Top Projection: ☐ 16" ☐ 18" ☐ 20" ☐ 22" ☐ 24" ☐ _____"

Bottom Projection: ☐ 16" ☐ 18" ☐ 20" ☐ 22" ☐ 24" ☐ _____"

Blockout: ☐ None Top projection _____" Bottom projection _____"

Blockout Projection: ☐ 2" ☐ 4" ☐ 6" ☐ 8" ☐ 10" ☐ 12" ☐ _____"

Wear Surface: ☐ None ☐ Wear face ☐ Side pad ☐ Head pad

Material: ☐ 22 oz. vinyl ☐ 40 oz. vinyl ☐ XL-100

Color: ☐ Black ☐ Tan ☐ Brown ☐ Blue ☐ Green

Wear Pleats: ☐ None ☐ 4" ☐ 8" ☐ 16" ☐ Side pads ☐ Head pad corners

Material: ☐ 22 oz. vinyl ☐ 40 oz. vinyl ☐ XL-100

Color: ☐ Black ☐ Tan ☐ Brown ☐ Blue ☐ Green

Options: ☐ Door numbers ☐ Flame retardant foam ☐ Flame retardant fabric

Mounting Brackets: ☐ Flats & angles ☐ Angles ☐ 1 1/2" Offsets & angles

*Conversions: To convert measurements to metric, see formulas below:

Inches x 25.4 = millimeters (Example: 4" x 25.4 = 101.6 mm)

Feet x .3048 = meters (Example: 12' x .3048 = 3.66 m)



Serco

1612 Hutton Drive, Suite 140

Carrollton, TX 75006

800.933.4834

www.sercodockproducts.com

4Front Engineered Solutions reserves the right to change specifications and designs without notice and without incurring obligations. 4Front Engineered Solutions products may be the subject of one or more U.S. and/or foreign, issued and/or pending, design and/or utility patents. Serco as word and logo are registered trademarks belonging to ASSA ABLOY Entrance Systems AB or other companies controlled by the same organization. All rights reserved.

©ASSA ABLOY. All rights reserved. Part of ASSA ABLOY. Printed in USA. Form # SPS-SELP-0925