

# S3000HL L-PAD Foam Dock Seal with Head Curtain

## Product Specifications



### DESIGN HIGHLIGHTS

- Provides positive seal between internal and external environments
- Endurance-tested foam core is continuously bonded to frame surface with flexible, non-flammable adhesive
- Top of hood is tapered forward and supported with thick wall aluminum pipe
- Hood curtain splits offer load relief and higher clearance
- Highly resilient, open-celled polyurethane foam compresses easily to extend seal life
- Roll-formed galvanized steel framing reduces pressure on building wall
- L-shaped sides compress around side of trailer to create a seal providing full width trailer access
- All pads are vented for air and moisture release
- Full length yellow stripes guide
- Heavy-duty, galvanized steel mounting brackets included

### APPLICATION DATA

Door width: \_\_\_\_\_ ft. \_\_\_\_\_ in.

Door height: \_\_\_\_\_ ft. \_\_\_\_\_ in.

Dock height: \_\_\_\_\_ ft. \_\_\_\_\_ in.

Bumper protection\*: \_\_\_\_\_ in.

(\*Includes bumper projection and any building wall/foundation offset or cantilever)

### TRUCKS AND TRAILERS SERVICED

Width: \_\_\_\_\_ Max. \_\_\_\_\_ Min.

Height: \_\_\_\_\_ Max. \_\_\_\_\_ Min.

Length: \_\_\_\_\_ Max. \_\_\_\_\_ Min.

Hydraulic tailgate: ☐ Yes ☐ No Rear step section: ☐ Yes ☐ No

Tailgate/step section size: \_\_\_\_\_ in Yard jockeys: ☐ Yes ☐ No

### CERTIFIED FOR CONSTRUCTION

BY \_\_\_\_\_

COMPANY \_\_\_\_\_

ADDRESS \_\_\_\_\_

DATE \_\_\_\_\_

### PROJECT INFORMATION

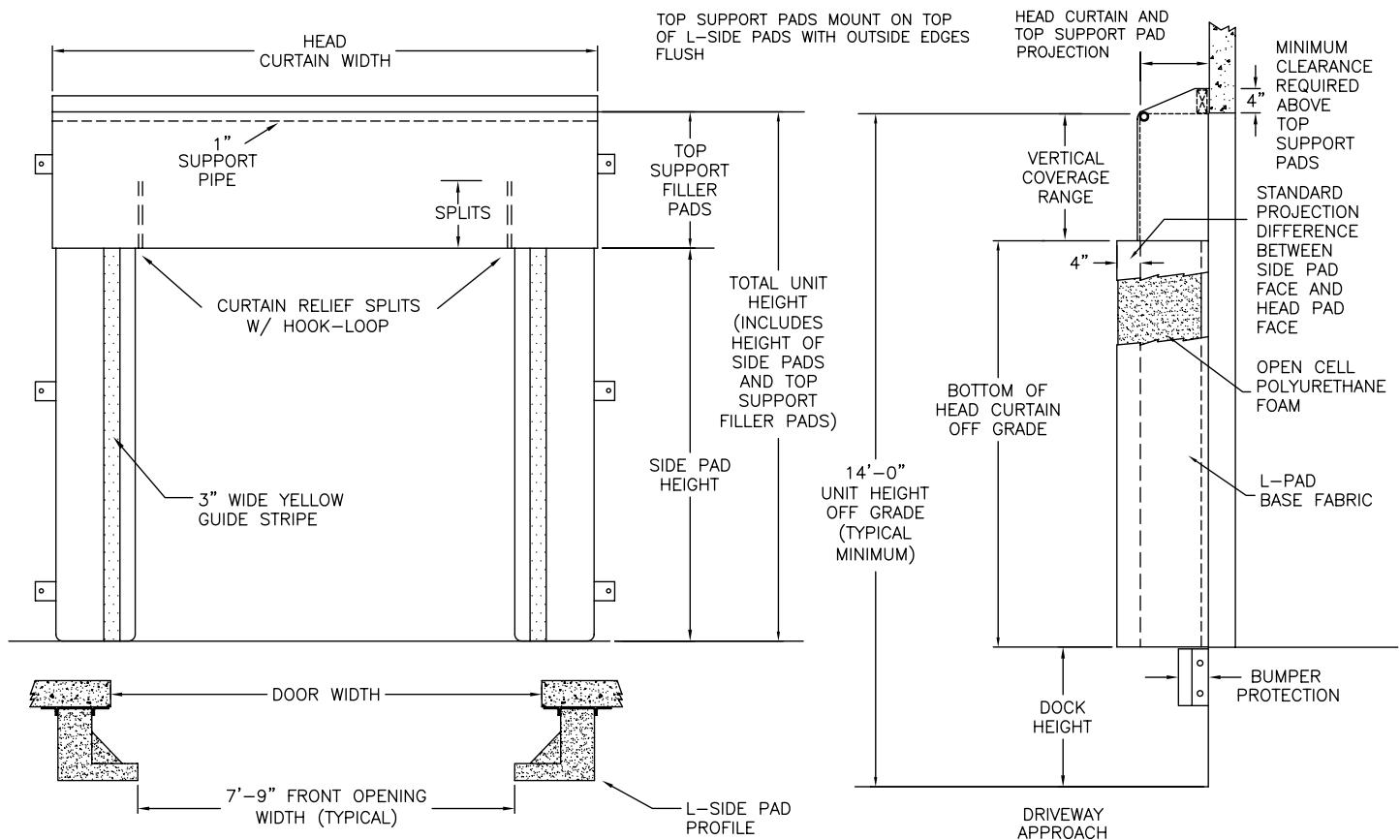
JOB NAME \_\_\_\_\_

ADDRESS \_\_\_\_\_

GENERAL CONTRACTOR \_\_\_\_\_

DISTRIBUTOR \_\_\_\_\_

QUANTITY \_\_\_\_\_



Quantity \_\_\_\_\_ Framing: Roll formed galvanized steel

**Head Curtain Width:** ☐ 129" for 9'6" door widths or smaller ☐ 135" for 9'7" to 10'0" door widths

**Head Curtain Drop:** ☐ 18" ☐ 24" ☐ 30" ☐ 36" ☐ 42" ☐ 48" ☐ \_\_\_\_\_"

**Head Curtain Splits:** ☐ 18" ☐ 24" ☐ 30" ☐ 36" ☐ No split

**Head Curtain Options:** ☐ None ☐ Pull rope assembly ☐ O-Rings ☐ 2" Foam front ☐ Sectional foam front

**Total Unit Height:** \_\_\_\_\_"

**Side Pad Face:** ☐ 18" for 9'6" door widths or smaller ☐ 21" for 9'7" to 10'0" door widths

**Base Material:** ☐ 22 oz. vinyl ☐ 40 oz. vinyl ☐ 16 oz. CSM ☐ 40 oz. CSM ☐ XL-100

**Color:** ☐ Black ☐ Tan ☐ Brown ☐ Blue ☐ Green

**Taper:** ☐ Tapered ☐ Non-Tapered

**Top Projection:** ☐ 16" ☐ 18" ☐ 20" ☐ 22" ☐ 24" ☐ \_\_\_\_\_"

**Bottom Projection:** ☐ 16" ☐ 18" ☐ 20" ☐ 22" ☐ 24" ☐ \_\_\_\_\_"

**Blockout:** ☐ None Top projection \_\_\_\_\_" Bottom projection \_\_\_\_\_"

**Blockout Projection:** ☐ 2" ☐ 4" ☐ 6" ☐ 8" ☐ 10" ☐ 12" ☐ \_\_\_\_\_"

**Wear Face:** ☐ None ☐ Hood ☐ Side pad ☐ Tip of "L" (XL-100)

**Material:** ☐ 22 oz. vinyl ☐ 40 oz. vinyl ☐ 40 oz. CSM ☐ XL-100

**Color:** ☐ Black ☐ Tan ☐ Brown ☐ Blue ☐ Green

**Wear Pleats:** ☐ None ☐ 4" ☐ WP8 ☐ WP16 ☐ Side pads ☐ Head pad corners

**Material:** ☐ 22 oz. vinyl ☐ 40 oz. vinyl ☐ 40 oz. CSM ☐ XL-100

**Color:** ☐ Black ☐ Tan ☐ Brown ☐ Blue ☐ Green

**Options:** ☐ Door numbers ☐ Flame retardant foam ☐ Flame retardant fabric only

**Mounting Brackets:** ☐ None ☐ Flats & angles ☐ Angles ☐ 1 1/2" Offsets & angles

\*Conversions: To convert measurements to metric, see formulas below:

Inches x 25.4 = millimeters (Example: 4" x 25.4 = 101.6 mm)

Feet x .3048 = meters (Example: 12' x .3048 = 3.66 m)

\*Note: Consult factory for blockout application assistance

\*Note: Not all options are available with all models



**Serco**  
1612 Hutton Drive, Suite 140  
Carrollton, TX 75006  
800.933.4834  
www.sercodockproducts.com

4Front Engineered Solutions reserves the right to change specifications and designs without notice and without incurring obligations. 4Front Engineered Solutions products may be the subject of one or more U.S. and/or foreign, issued and/or pending, design and/or utility patents. Serco as word and logo are registered trademarks belonging to ASSA ABLOY Entrance Systems AB or other companies controlled by the same organization. All rights reserved.

©ASSA ABLOY. All rights reserved. Part of ASSA ABLOY. Printed in USA. Form # SPS-SELC-0925