

# TL Series Truck Leveler

## Product Specifications



### DESIGN HIGHLIGHTS

- Fully hydraulic operation
- 5 HP motor. All 3-phase voltages (oil included)
- Checker plate deck
- Spherical bearings in cylinders allow for trailer misalignment
- Fall safe velocity fuse
- Beveled toe guards
- 24" vertical travel
- Steel NEMA 12 push-button control panel

### AVAILABLE OPTIONS

- ☐ Surface mounted
- ☐ Shallow pit

### AVAILABLE OPTIONS

- ☐ 14' length
- ☐ 16' length
- ☐ 18' length
- ☐ 20' length
- ☐ 36" vertical travel
- ☐ Biometric switch thumb reader
- ☐ Deep pit style (lift cylinders under deck)
- ☐ Truck positioner guides - internal 5" high
- ☐ Truck positioner guides - external 12" high
- ☐ Fused disconnect on control panel
- ☐ NEMA 4 control
- ☐ Special paint color \_\_\_\_\_
- ☐ Other \_\_\_\_\_

### AVAILABLE ACCESSORIES

- ☐ Interior/exterior light communication system
- ☐ Master control panel
- ☐ Combination control panel
- ☐ Other \_\_\_\_\_

### PROJECT INFORMATION

JOB NAME \_\_\_\_\_

ADDRESS \_\_\_\_\_

GENERAL CONTRACTOR \_\_\_\_\_

DISTRIBUTOR \_\_\_\_\_

MODEL \_\_\_\_\_ QUANTITY \_\_\_\_\_

VOLTAGE/PHASE \_\_\_\_\_

### CERTIFIED FOR CONSTRUCTION

BY \_\_\_\_\_

COMPANY \_\_\_\_\_

ADDRESS \_\_\_\_\_

DATE \_\_\_\_\_

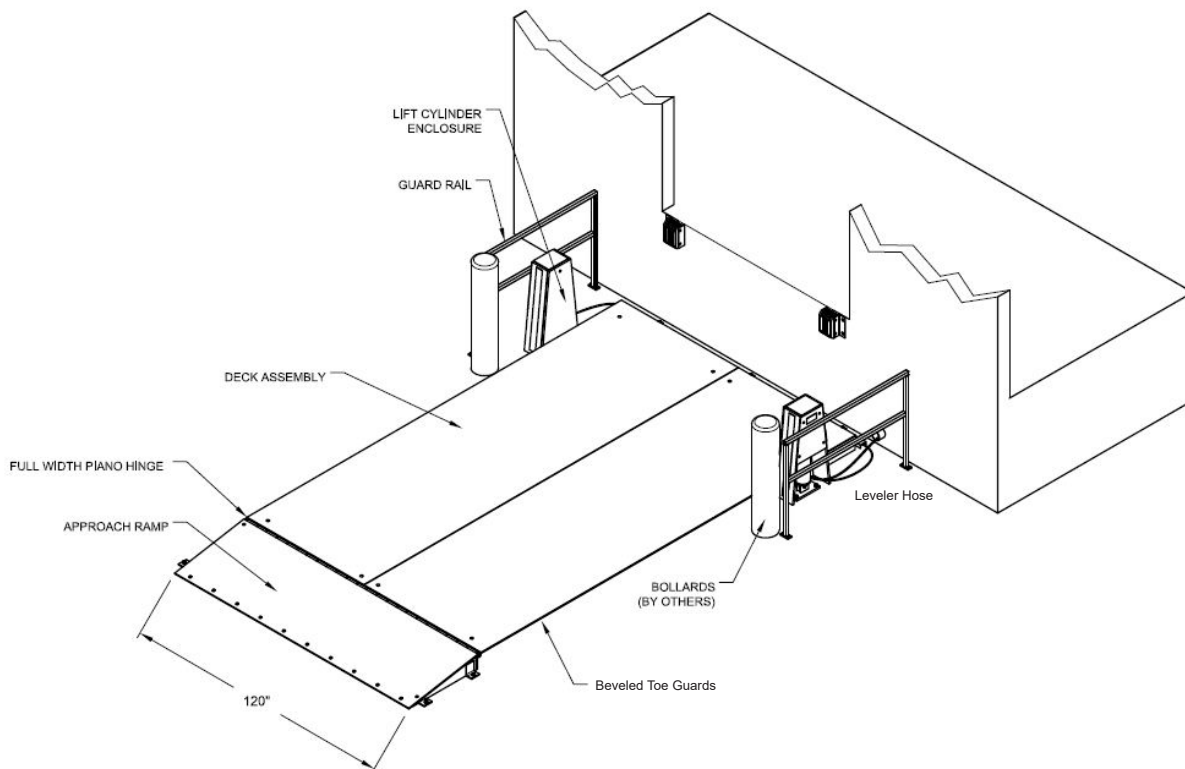
1. **General:** The Serco Truck Leveler is a push button operated electrohydraulic system for raising and lowering trailers at the loading dock for safer and easier transfer of materials. To be hydraulic operation with NEMA 12 Control Panel (208V 3 phase) (230V 3 phase) (460V 3 phase) (600V 3 phase). Truck Leveler is to be 60,000 lb. capacity. Deck size to measure 10' wide x 14', 16', 18', or 20' long. Approach ramp to measure 10' wide x 3' long. Lowered height to be a 6 1/2". Vertical travel is 24".
2. **Operation:** The truck is backed into position against the dock bumpers and the brakes are set. Before raising truck, it MUST be properly restrained by a suitable truck restraint system. The dock attendant presses the up button to raise the truck leveler. The truck level is controlled by constant pressure buttons for accurate positioning. When loading/unloading is complete, the dock attendant presses the lower button to return the leveler to the stored position.
3. **Installation:** The Truck Leveler can be surface mounted in the driveway directly in front of the dock, centered to the door, or to accommodate higher trailers, the unit may be installed in a shallow pit. Consult factory for proper application. Control panel and hydraulic system should be installed in accordance with provided instructions.
4. **Construction:** Truck Leveler deck is a welded steel structure with a 3/8" checker plate deck surface, heavy duty I beam understructure, and a removable plate to provide access to the pit (when specified) for maintenance. High quality products are manufactured in a Certified Welding Fabricator (CWF) facility. Truck Leveler shall have two heavy duty hydraulic cylinders with chrome plated rods to insure longer life. The cylinders are synchronized to eliminate side to side deflection during operation. Velocity fuses are provided at the cylinders base to prevent collapsing if the supply line fails. Hydraulic cylinders are single speed, piston seal and displacement type with seamless tube, micro-honed cylinder walls and chrome finish piston rods.
5. **Electrical Specifications:** Steel NEMA 12 push-button control panel. Supplied in 208V, 230V, 460V, 600V; all 3 phase, 60 Hz. 5 HP motor/pump.
6. **Limited Warranty:** Limited parts & labor warranty on all components under normal use for a 1-year "Base Warranty Period" beginning on the completion of installation or the sixtieth (60th) day after shipment, whichever is earlier. Additional limited 4-year parts only warranty on hydraulic power unit and cylinders.

#### SHALLOW PIT-MOUNTED TRUCK LEVELER

NOMINAL DIMENSIONS		
MODEL	WIDTH	LENGTH
TL1014PM	10'	14'
TL1016PM	10'	16'
TL1018PM	10'	18'
TL1020PM	10'	20'

#### SURFACE-MOUNTED TRUCK LEVELER

NOMINAL DIMENSIONS		
MODEL	WIDTH	LENGTH
TL1014SM	10'	14'
TL1016SM	10'	16'
TL1018SM	10'	18'
TL1020SM	10'	20'



**Serco**  
 1612 Hutton Drive, Suite 140  
 Carrollton, TX 75006  
 800.933.4834  
[www.sercodockproducts.com](http://www.sercodockproducts.com)

4Front Engineered Solutions reserves the right to change specifications and designs without notice and without incurring obligations. 4Front Engineered Solutions products may be the subject of one or more U.S. and/or foreign, issued and/or pending, design and/or utility patents. Serco as word and logo are registered trademarks belonging to ASSA ABLÖY Entrance Systems AB or other companies controlled by the same organization. All rights reserved.

©ASSA ABLÖY. All rights reserved. Part of ASSA ABLÖY. Printed in USA. Form # SPS-LWTL-0725