

# Truck Leveler with Universal TruckChock

## Product Specifications



### DESIGN HIGHLIGHTS

- Fully hydraulic operation
- 7.5 HP motor. All 3-phase voltages (oil included)
- Checker plate deck
- Spherical bearings in cylinders allow for trailer misalignment
- Fall safe velocity fuse
- LED Compact Exterior Lights
- Hydraulic powered wheel chocks
- Audible fault alarm
- 24" vertical travel
- PLC operation
- Steel NEMA 12 push-button control panel

### AVAILABLE OPTIONS

- ☐ Surface mounted
- ☐ Shallow pit

### AVAILABLE OPTIONS

- ☐ 18' length
- ☐ 20' length
- ☐ 36" vertical travel
- ☐ Deep pit style (lift cylinders under deck)
- ☐ Truck positioner guides - internal 5" high
- ☐ Truck positioner guides - external 12" high
- ☐ Fused disconnect on control panel
- ☐ Special paint color \_\_\_\_\_
- ☐ Other \_\_\_\_\_

### AVAILABLE ACCESSORIES

- ☐ Master control panel
- ☐ Combination control panel
- ☐ Other \_\_\_\_\_

### PROJECT INFORMATION

JOB NAME \_\_\_\_\_

ADDRESS \_\_\_\_\_

GENERAL CONTRACTOR \_\_\_\_\_

DISTRIBUTOR \_\_\_\_\_

MODEL \_\_\_\_\_ QUANTITY \_\_\_\_\_

VOLTAGE/PHASE \_\_\_\_\_

### CERTIFIED FOR CONSTRUCTION

BY \_\_\_\_\_

COMPANY \_\_\_\_\_

ADDRESS \_\_\_\_\_

DATE \_\_\_\_\_

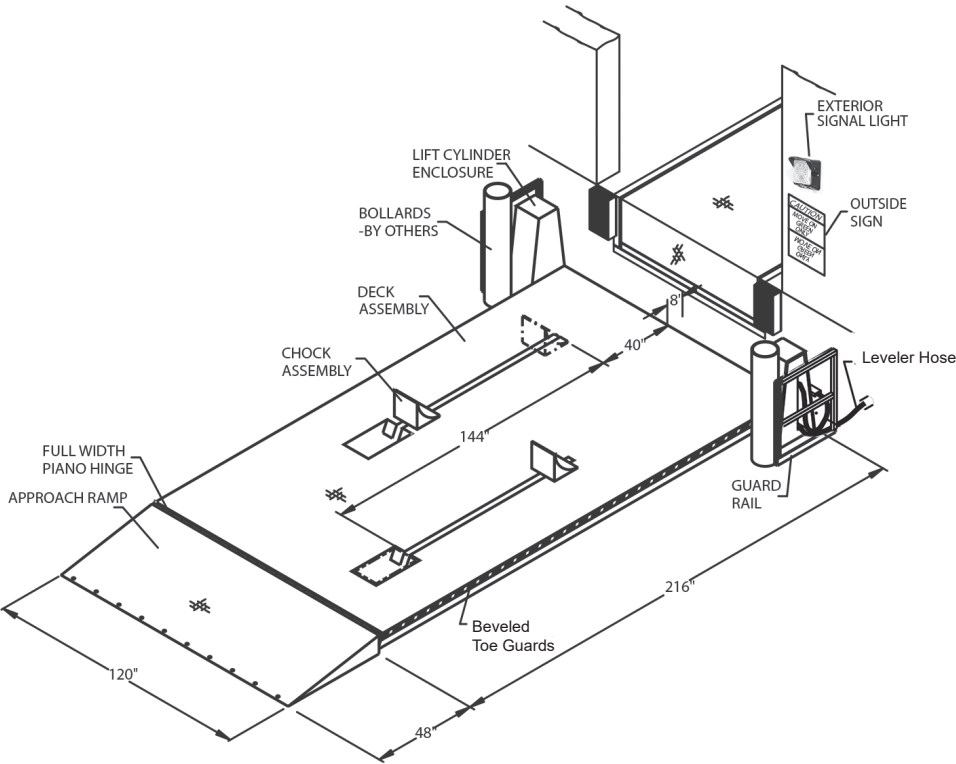
1. **General:**The Serco Truck Leveler is a push button operated electrohydraulic system for raising, lowering, and automatically chocking trailers at the loading dock for safer and easier transfer of materials. To include powered wheel chocking device designed to chock the wheel of a truck and hold the truck at the loading dock. To be hydraulic operation with NEMA 12 Control Panel (208V 3 phase) (230V 3 phase) (460V 3 phase) (600V 3 phase). Truck Leveler is to be 60,000 lb. capacity. Deck size to measure 10' wide x 18' or 20' long. Approach ramp to measure 10' wide x 4' long. Lowered height to be a 8 1/2" Vertical travel is 24". Surface mounted housing includes the hydraulically powered UNIVERSAL TRUCK CHOCK™ (14" high) which stores below the Truck Leveler deck and raises to an operating position when activated. The system includes operating controls and hydraulic system mounted inside the building along with red/green light communication system.
2. **Operation:** The truck is backed into position against the dock bumpers and the brakes are set. The dock attendant turns a switch on the control panel to activate the UNIVERSAL TRUCK CHOCK. When activated, the outside light changes from green to red. The UNIVERSAL TRUCK CHOCK rises from its stored position and moves toward the dock until it snugs up against the truck tire. Then the inside light changes from red to green. Once the inside light turns green, the dock attendant presses the raise button to lift the trailer to the appropriate position. When loading/unloading is complete the dock attendant presses the lower button to return the truck leveler to the stored position. When the truck leveler is lowered, the dock attendant turns a switch to release the chocks. The inside light changes from green to red. After chocks are released the outside light will change from red to green indicating the truck may depart.
3. **Installation:** The Truck Leveler can be surface mounted in the driveway directly in front of the dock, centered to the door, or to accommodate higher trailers, the unit may be installed in a shallow pit. Consult factory for proper application. Control Panel and hydraulic system should be installed in accordance with provided instructions.
4. **Construction:** Truck Leveler deck is a welded steel structure with a 3/8" checker plate deck surface, heavy duty I beam understructure, and a removable plate to provide access to the pit (when specified) for maintenance. High quality products are manufactured in a Certified Welding Fabricator (CWF) facility. Truck Leveler shall have two heavy duty hydraulic cylinders with chrome plated rods to insure longer life. The cylinders are synchronized to eliminate side to side deflection during operation. Velocity fuses are provided at the cylinders base to prevent collapsing if the supply line fails. Hydraulic cylinders are single speed, piston seal or displacement type with seamless tube, micro-honed cylinder walls and chrome finish piston rods. UNIVERSAL TRUCK CHOCK™ includes heavy duty chock weldment of 1/4" steel plate, 12" high, with 21" engagement radius. UNIVERSAL TRUCK CHOCK™ includes two double-acting heavy duty cylinders with chrome plated cylinder rods.
5. **Electrical Specifications:** Steel NEMA 12 push-button Control Panel. Supplied in 208V, 230V, 460V, 600V; all 3 phase, 60 Hz. 7.5 HP motor/pump.
6. **Limited Warranty:** Limited parts & labor warranty on all components under normal use for a 1-year "Base Warranty Period" beginning on the completion of installation or the sixtieth (60th) day after shipment, whichever is earlier.

**SHALLOW PIT-MOUNTED TRUCK LEVELER**

DIMENSIONS		
MODEL	WIDTH	LENGTH
TL-UTC 1018PM	10'	18'
TL-UTC 1020PM	10'	20'

**SURFACE-MOUNTED TRUCK LEVELER**

DIMENSIONS		
MODEL	WIDTH	LENGTH
TL-UTC 1018SM	10'	18'
TL-UTC 1020SM	10'	20'



1612 Hutton Drive, Suite 140  
Carrollton, TX 75006  
800.933.4834  
www.sercodockproducts.com

4Front Engineered Solutions reserves the right to change specifications and designs without notice and without incurring obligations. 4Front Engineered Solutions products may be the subject of one or more U.S. and/or foreign, issued and/or pending, design and/or utility patents. Serco as word and logo are registered trademarks belonging to ASSA ABLOY Entrance Systems AB or other companies controlled by the same organization. All rights reserved.