



# TKO WELTERWEIGHT®

## PRODUCT SPECIFICATIONS

### INDUSTRIAL DOCK DOOR



### Design Highlights

- Patented design releases door panels upon impact from interior while providing security from exterior
- Heavy-duty single knockout track is pre-punched, full height 12 gauge galvanized steel
- Unique impact resistant panel construction with 2" thick insulation
- Heavy-duty spring-loaded plungers on knockout panels eliminate high-maintenance roller wheels
- Panel-mounted side loop & brush seal, Lintel brush seal, foam-filled loop bottom weather seal. Optional bottom brush seal available in addition to standard seal
- Torsion spring counterbalance system rated for 15,000-cycle minimum. Higher cycle torsion springs or counterweight system available
- One TKO lock for security or knockout provisions
- Black grip door lift handle, two per door standard

### Door Size

Opening Width \_\_\_\_\_ in / cm

Opening Height \_\_\_\_\_ in / cm

### Project Information

Job Name \_\_\_\_\_  
 Address \_\_\_\_\_  
 General Contractor \_\_\_\_\_  
 Distributor \_\_\_\_\_  
 Model \_\_\_\_\_ Quantity \_\_\_\_\_ Voltage/Phase \_\_\_\_\_

### Options

#### Track

- Steel Track
- Impact-A-Track  3'  6'  Full Height
- Double Knockout Header  Full Height
- C-Channel Spring Pad Mount

#### Panel

- Slide Lock  Left  Right  Dual
- Knockout Lock
- Pilfer Proof Lock
- Anti Drift Up Lock  Anti Drift Down Lock
- Posi-Lock  Left  Right
- Single Pane Window  Dual Pane Window
- Vented Window
- Full Vision Panel  Clear  Translucent
- Super Panel  Bottom  2nd  3rd
- Blade Lintel Seal
- 3" Bottom Brush Seal
- Thermal Package

#### Counterbalance

- Cycle Springs:  25k  50k  75k  100k
- Counterweight System
- Solid Shaft Upgrade

#### Operator

- Manual Chain Hoist
- Auxiliary Trolley Chain Hoist
- Model J Operator VAC \_\_\_\_\_ Phase \_\_\_\_\_
- Model H Operator VAC \_\_\_\_\_ Phase \_\_\_\_\_
- Model T Operator VAC \_\_\_\_\_ Phase \_\_\_\_\_
- Primary Safety Features
  - Monitored Photo Eyes
  - Monitored Safety Edge
- Secondary Safety Features
  - Electric 2-wire Safety Edge
  - Electric 4-wire fail safe Safety Edge
  - Pneumatic Safety Edge
- Pull Cord Quantity \_\_\_\_\_
- Car Wash Operator Upgrade
- NEMA 4 Controls Upgrade

### Certified For Construction

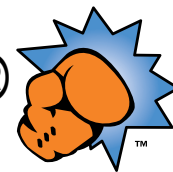
By \_\_\_\_\_  
 Company \_\_\_\_\_  
 Address \_\_\_\_\_  
 Date \_\_\_\_\_



# TKO WELTERWEIGHT®

## PRODUCT SPECIFICATIONS

### INDUSTRIAL DOCK DOOR



#### DOOR OPENING DIMENSIONS & CLEARANCES

Opening Width (To Nearest 1/4") \_\_\_\_\_

Opening Height (To Nearest 1") \_\_\_\_\_

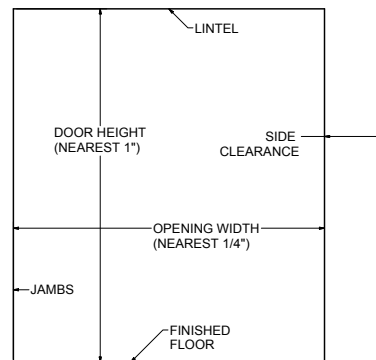
Side Clearance Right \_\_\_\_\_

Side Clearance Left \_\_\_\_\_

Jamb Substrate/Mounting Surface Material: Specify Block, Masonry, Wood, Steel, Insulated Panel, Other

Upper \_\_\_\_\_

Lower \_\_\_\_\_



#### OVERHEAD OBSTRUCTIONS & CLEARANCES

**Zone A Obs. Type: Conduit, Beam, Other** \_\_\_\_\_

Dimension A1 \_\_\_\_\_

Dimension A2 \_\_\_\_\_

**Zone B Obs. Type: Ceiling, Truss, Other** \_\_\_\_\_

Dimension B1 \_\_\_\_\_

Dimension B2 \_\_\_\_\_

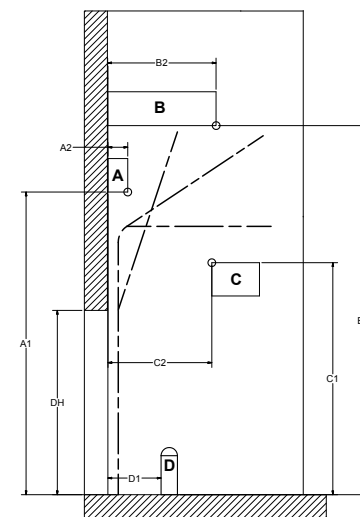
**Zone C Obs. Type: Racking, Sprinkler, Other** \_\_\_\_\_

Dimension C1 \_\_\_\_\_

Dimension C2 \_\_\_\_\_

**Zone D Obs. Type: Bollard, Other** \_\_\_\_\_

Dimension D1 \_\_\_\_\_



- General:** TKO Door's patented design releases door panels upon impact from interior while providing security from exterior.
- Track:** Heavy-duty single knockout track is pre-punched, full height, 12 gauge galvanized steel.
- Panel:** Unique panel construction. Impact resistant, 2" thick, insulated.
- Guide Pins:** Heavy-duty spring-loaded plungers on knockout panels, eliminate high maintenance roller wheels.
- Seals:** Panel-mounted side loop & brush seal, Lintel brush seal, foam filled loop bottom weather seal. Optional bottom brush seal available in addition to standard loop.
- Counterbalance System:** Torsion spring counterbalance system rated for 15,000-cycle minimum. Higher cycle torsion springs or counterweight system available.
- Lock:** One TKO lock for security or knockout provisions.
- Handles:** Black grip door lift handle, two per door standard.
- Warranty:** TKO Dock Doors, a business unit of 4Front Engineered Solutions, Inc., warrants that every door, its hardware and fittings will be free of defects in workmanship and material. Should any defect in workmanship or material appear within ONE (1) year of shipment, TKO shall, upon notification, correct such non-conformity at its option, by repairing or replacing any defective part or parts. **This limited warranty does not include** normal wear, modifications, and damage beyond the manufacturer's control, replacement labor or implied cycle life of counter balance systems (cables, spring assembly, drums, shaft cones, shaft bearings or center bearing bracket).
- Panel Limited Warranty:** door will remain operational after resetting from impact under normal use, service and maintenance for ONE (1) year (excluding any window portion thereof) from date of shipment. Does not cover punctures, cracks or slices in panel(s). Optional Super bottom panel: two-year performance limited warranty from date of shipment.
- Impact-A-Track Limited Warranty** TKO Dock Doors warrants its Impact-A-Track™ for FIVE (5) years from date of shipment. This is for the Impact-A-Track portion only. Cuts, gouges and abrasions are not considered warrantable conditions.